

# CR4250

## Branch Performance Routers

The Cradlepoint CR4250 Branch Performance Router is designed for mid-sized branches and businesses with expanded performance and connectivity needs. It intelligently manages WAN connectivity for a highly available “connected experience” at the edge.

With the CR4250’s high-performance processor, available 8-port PoE, and dual SFP+ ports, the CR4250 offers flexible WAN deployment for med-sized branch offices and businesses. When combined with Cradlepoint AP22 WiFi Access Points and the Cradlepoint CBA850 LTE Adapter, the CR4250 solution offers single-pane-of-glass management for the entire branch site.

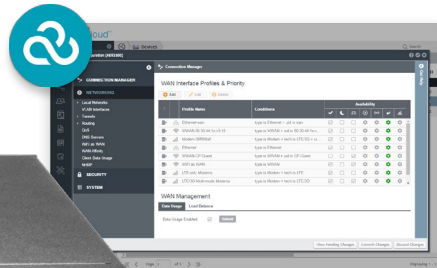
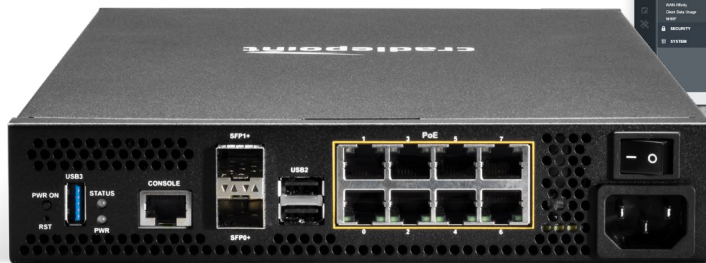
Cradlepoint CR4250 branch routers are sold in all-inclusive NetCloud Solution Packages for Branch Networks.

### NetCloud Solution Packages include:

- + Award-winning remote cloud management & network intelligence with **NetCloud Manager**
- + Secure IoT networking with **NetCloud Perimeter** for perimeter-secured overlay networks
- + **24x7 support & limited lifetime warranty**

**Applications:**

- Medium Branches
- Restaurants/Retail



### KEY FEATURES

- + High-performance processor to easily handle branch workloads while providing advanced features.
- + 8 PoE+ Gigabit Ethernet ports & 2 SFP+ ports supporting up to 10 Gbps
- + Single-pane-of-glass management for routers & optional Cradlepoint LTE adapters & WiFi access points
- + Application-aware traffic analytics, firewall & QoS

- + Zero-touch deployment without on-site IT staff
- + Intelligent SD-WAN to ensure optimal application performance & uptime
- + Unified edge security for secure Internet access & protection for on-site users & devices
- + Advanced IoT support to securely connect branch IoT devices

### NETCLOUD PLATFORM FEATURES

- + Cloud-managed for ease of deployment, remote management & reporting
- + Includes NetCloud Perimeter for reliable IoT network security

## Benefits

### INCREASE NETWORK AVAILABILITY

- + Multi-WAN for reliability & bandwidth
- + Application-aware policies for intelligent WAN selection & optimization
- + Integrates with Cradlepoint LTE adapters to ensure connectivity anywhere
- + Monitor uptime with real-time alerts

### DEPLOY & SCALE QUICKLY

- + Includes NetCloud Manager to increase speed of deployment with “zero-touch” configuration
- + Manage, monitor & troubleshoot remotely

### SECURE & PROTECT

- + Advanced security, VPN & stateful firewall to protect sensitive data
- + Cloud-managed security & content filtering (CIPA compliant)
- + Integral part of PCI-compliant networks
- + Create encrypted & perimeter-secured overlays that protect branch IoT devices & isolate them from other networks

### EXTEND & CUSTOMIZE

- + Router SDK: Support unique applications with custom scripts running on the router
- + NetCloud Manager API: Utilize router data while maintaining single-pane-of-glass network management

QUICK SPECS	
Ports (LAN / WAN switchable)	8 GigE ports & 2 SFP+ ports
PoE	Up to 8 ports with PoE SKU
Processor	2.2 GHz x86 quad core
Memory	8 GB DDR4 ECC / 16 GB eMMC
Ruggedized	No
Housing	Metal
Operating Temperature	0°C to 40°C (32°F to 104°F)
Supports LTE-Advanced	Optional with CBA850
WiFi (Dual-band a/b/g/n/ac)	Optional with AP22
Management	Cloud-based application-aware
SD-WAN & Virtual Cloud Networking	Yes

### Solution Packages with the CR4250 Branch Performance Router

Solution Package	Part Numbers
<b>North America:</b>	
NetCloud Essentials for Branch (NA)	BDx-425P-00N
<b>Europe:</b>	
NetCloud Essentials for Branch (EU)	BDx-425P-00E
NetCloud Essentials for Branch (UK)	BDx-425P-00U
<b>Asia-Pacific:</b>	
NetCloud Essentials for Branch (AU)	BDx-425P-00P
<b>All Regions:</b>	
NetCloud Advanced Upgrade for Branch	BDx-NCADV

*x = 1, 3, or 5 years*

## Comprehensive 24x7 Support & Limited Lifetime Warranty

24x7 support is included in all NetCloud Solution Packages (phone support: 24-hour weekdays with emergency response on weekends; web: 24x7; chat: 24x5). IT professionals have access to networking experts who can expedite issue resolution and help maximize operational efficiency. When your applications are mission-critical, you're covered by Cradlepoint Global Support and limited lifetime hardware warranty.

For more information, visit [cradlepoint.com/support-services](http://cradlepoint.com/support-services).

FOR MORE INFORMATION, VISIT [CRADLEPOINT.COM/CR4520](http://CRADLEPOINT.COM/CR4520) OR CONTACT SALES TO REQUEST A FIELD TEST.